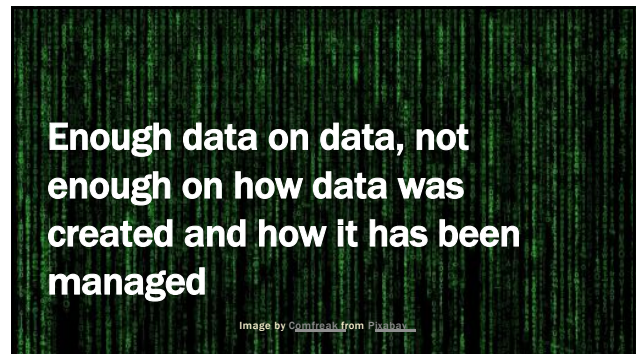


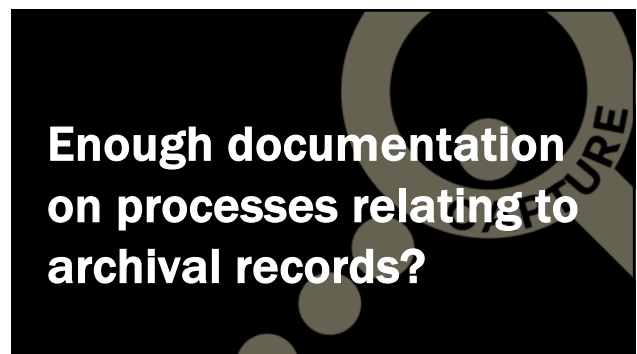
1



2



3



4



5



6



7



8

**Duranti:**  
**"Provenance metadata is a part of record. Paradata is not."**

9

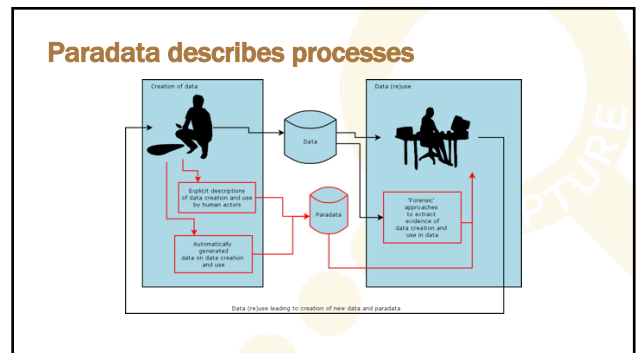
**Enough data on data, not enough on how data was created and how it has been managed**

Image by Camfrank from Pixabay

10



11



12

Extracting paradata (or information for paradata) using named entity recognition and object identification.

13

Wait!?  
If paradata is not a part of the record...?

14

Trials on archaeological investigation reports.

15



16

Bilaga 1. Fyndlista

### Fyndlista

Kv Sunneman 2 2018  
RAÅ 170 Växjö sn, Småland  
Lutiser 30-10-2018  
KLM-dnr: 13-42-2018

Fynd-id	Kontext	Förenkelt typ	Vikt (g)	Antal	Placering	Kommentar
F1	A04	Karl, sockkärl	656	4		Keramikkärl med mindre fat, ett stort på botten med kamning
F2	A04	Karl, fat	189	1		Keramikkärl med knopps
F3	A04	Karl, flaska	53	1		Botten till rund rak, tillfäll med genom förbild botten
F4	A04	Kringla	10	3		Färgad av en keramikkärl

Bilaga 1. Fyndlista

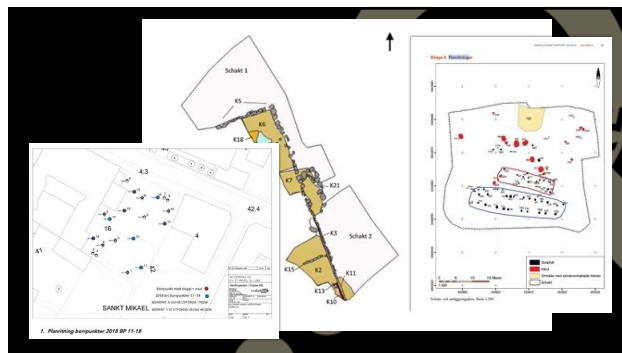
A. Kertabunden

Fyndid	Typ	Material	Antal	Vikt (g)	Längd (mm)	Överg
1	Gjutorn?		1	0,5	40	
2	Spore med skärklar och väpnare	Järn	1	145	86	
3	Plata	Berghorn	1	2	0,9	
4	Bestag	Berghorn	1	6	23	
5	Spårnit	Järn	7	68	67	
6	Humöpp	Brons	1	3	14	Sålfynd
7	Plata	Glas	1	4	10	Sålfynd
8	Plata (rakt)	Glas?	1	2	9	
9	Plata	Berghorn	1	2	4	Sålfynd
10	Plata (bromad)	Glas	1	2	7	
11	Kam	Berghorn	1	19	75	
12	Keramik	Lera	1	47		
13	Oövert	Järn	8	38,5		
14	Armbandspl	Järn	1	4,5	50	

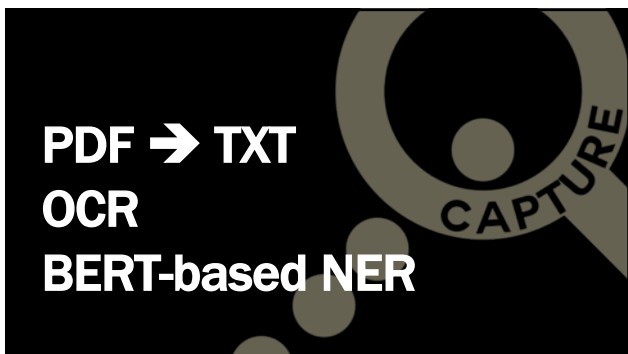
B. "Bönkergränd"

Fyndid	Typ	Material	Antal	Vikt (g)	Längd (mm)	Bredd (mm)
1	Spårar	Järn	4	45	100	
2	Ban, gennål	Bron			520	

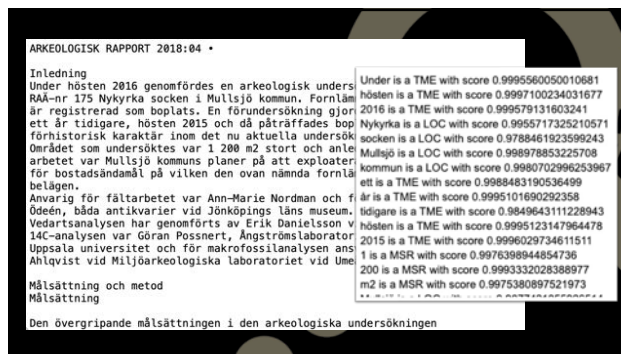
17



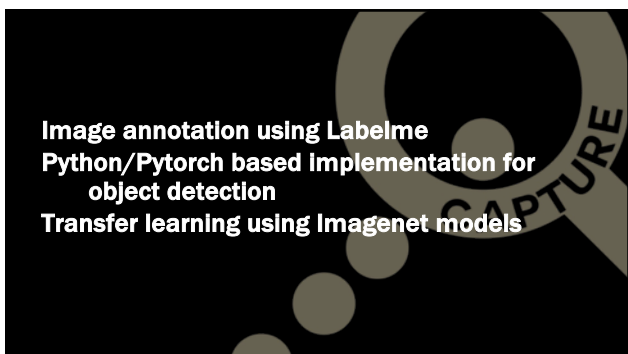
18



19



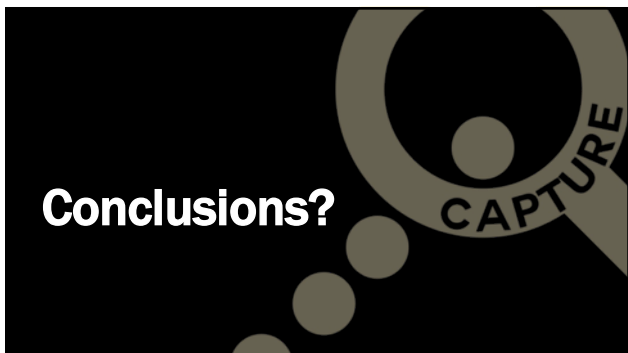
20



21



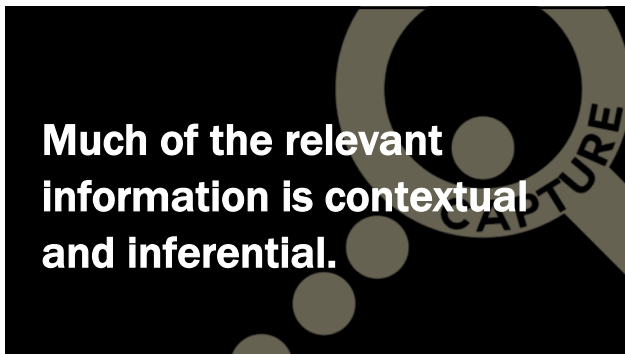
22



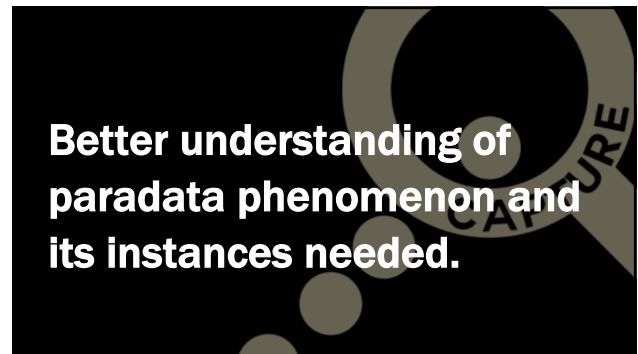
23



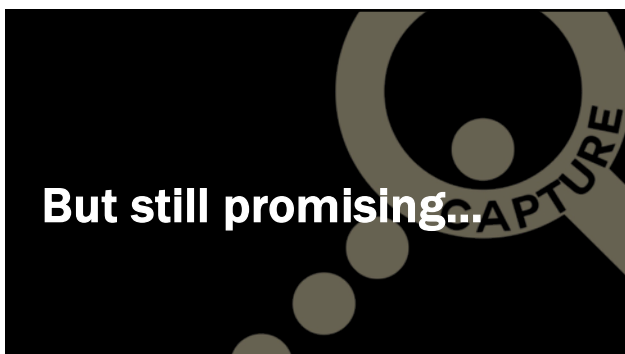
24



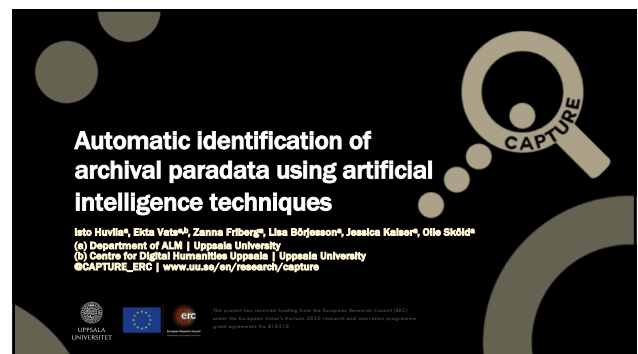
25



26



27



28